

General Information



Features:

- Various applications in public ground lighting and architectural lighting.
- Good price/performance ratio. The most economical replacement for HPS, Metal Halide and Mercury lamps.
- Sturdy high shock & vibration resistant construction with Integrated high power & high efficiency LEDs
- No UV radiation emitted; no Mercury; no Infrared Radiation
- 30,000 hrs Long life with over 50% savings in energy consumption compare with Mercury, Halogen and Metal Halide lamps.
- Solid-state wide voltage and constant current design with no noise or flickering.
- Operate in accordance with UL, ETL, CE and FCC testing standards. Instant on and instant off.

Product Parameters

DF-FL-01-10W

SPECIFICATIONS:

Input Voltage: AC 85-265V

Power Consumption: 10W

Power Factor: > 0.95

Driver Efficiency: > 89%

Color Temperature: 3000K-7500K optional

Total Harmonic Distortion: < 15%

Color Rendering Index: > 78 Ra

Viewing Angle: 75°

Initial Luminous Flux: 650LM

Operating Temperature: -35°C ~ +45°C

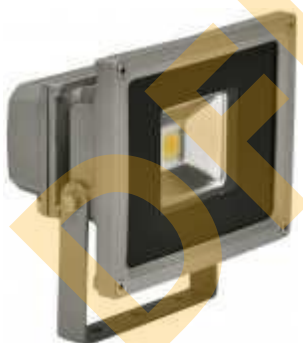
Operating Humidity: 10%-90%RH

Size: 125mm*85mm*95mm

Life: > 30,000 hrs

Fixture Materials: Aluminum Alloy Housing

IES File: Available



DF-FL-01-30W



SPECIFICATIONS:

Input Voltage: AC 85-265V

Power Consumption: **30W**

Power Factor: > 0.95

Driver Efficiency: > 89%

Color Temperature: 3000K-7500K optional

Total Harmonic Distortion: < 15%

Color Rendering Index: > 78 Ra

Viewing Angle: 75°

Initial Luminous Flux: **2400LM**

Operating Temperature: -35℃ ~ +45℃

Operating Humidity: 10%-90%RH

Size: 225mm*185mm*130mm

Life: > 30,000 hrs

Fixture Materials: Aluminum Alloy Housing

IES File: **Available**

DF-FL-01-50W



SPECIFICATIONS:

Input Voltage: AC 85-265V

Power Consumption: **50W**

Power Factor: > 0.95

Driver Efficiency: > 89%

Color Temperature: 3000K-7500K optional

Total Harmonic Distortion: < 15%

Color Rendering Index: > 78 Ra

Viewing Angle: 75°

Initial Luminous Flux: **2800LM**

Operating Temperature: -35℃ ~ +45℃

Operating Humidity: 10%-90%RH

Size: 285mm*235mm*130mm

Life: > 30,000 hrs

Fixture Materials: Aluminum Alloy Housing

IES File: **Available**

DF-FL-01-70W



SPECIFICATIONS:

Input Voltage: AC 85-265V

Power Consumption: **70W**

Power Factor: > 0.95

Driver Efficiency: > 89%

Color Temperature: 3000K-7500K optional

Total Harmonic Distortion: < 15%

Color Rendering Index: > 78 Ra

Viewing Angle: 75°

Initial Luminous Flux: **4700LM**

Operating Temperature: -35°C ~ +45°C

Operating Humidity: 10%-90%RH

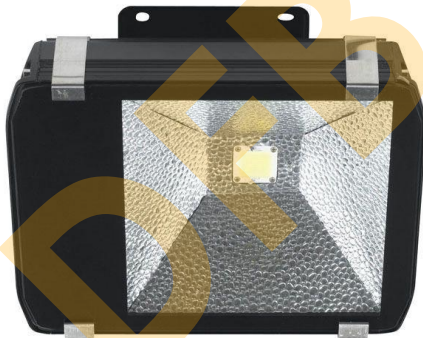
Size: 360mm*285mm*120mm

Life: > 30,000 hrs

Fixture Materials: Aluminum Alloy Housing

IES File: [Available](#)

DF-FL-02-50W



SPECIFICATIONS:

Input Voltage: AC 85-265V

Power Consumption: **50W**

Power Factor: > 0.95

Driver Efficiency: > 89%

Color Temperature: 3000K-7500K optional

Total Harmonic Distortion: < 15%

Color Rendering Index: > 78 Ra

Viewing Angle: 75°

Initial Luminous Flux: **4160LM**

Operating Temperature: -35°C ~ +45°C

Operating Humidity: 10%-90%RH

Size: 360mm*285mm*165mm

Life: > 30,000 hrs

Fixture Materials: Aluminum Alloy Housing

IES File: [Available](#)

DF-FL-02-80W



SPECIFICATIONS:

Input Voltage: AC110-265V

Power Consumption: **80W**

Power Factor: > 0.95

Driver Efficiency: > 89%

Color Temperature: 3000K-7500K optional

Total Harmonic Distortion: < 15%

Color Rendering Index: > 78 Ra

Viewing Angle: 75°

Initial Luminous Flux: **6360LM**

Operating Temperature: -35℃ ~ +45℃

Operating Humidity: 10%-90%RH

Size: 560mm*285mm*160mm

Life: > 30,000 hrs

Fixture Materials: Aluminum Alloy Housing

IES File: [Available](#)

DF-FL-02-100W



SPECIFICATIONS:

Input Voltage: AC 85-265V

Power Consumption: **100W**

Power Factor: > 0.95

Driver Efficiency: > 89%

Color Temperature: 3000K-7500K optional

Total Harmonic Distortion: < 15%

Color Rendering Index: > 78 Ra

Viewing Angle: 75°

Initial Luminous Flux: **7800LM**

Operating Temperature: -35℃ ~ +45℃

Operating Humidity: 10%-90%RH

Size: 560mm*285mm*160mm

Life: > 30,000 hrs

Fixture Materials: Aluminum Alloy Housing

IES File: [Available](#)

DF-FL-02-140W**SPECIFICATIONS:**

Input Voltage: AC 85-265V

Power Consumption: **140W**

Power Factor: > 0.95

Driver Efficiency: > 89%

Color Temperature: 3000K-7500K optional

Total Harmonic Distortion: < 15%

Color Rendering Index: > 78 Ra

Viewing Angle: 75°

Initial Luminous Flux: **10000LM**

Operating Temperature: -35°C ~ +45°C

Operating Humidity: 10%-90%RH

Size: 560mm*285mm*160mm

Life: > 30,000 hrs

Fixture Materials: Aluminum Alloy Housing

IES File: [Available](#)